



# NCR1 Data Center

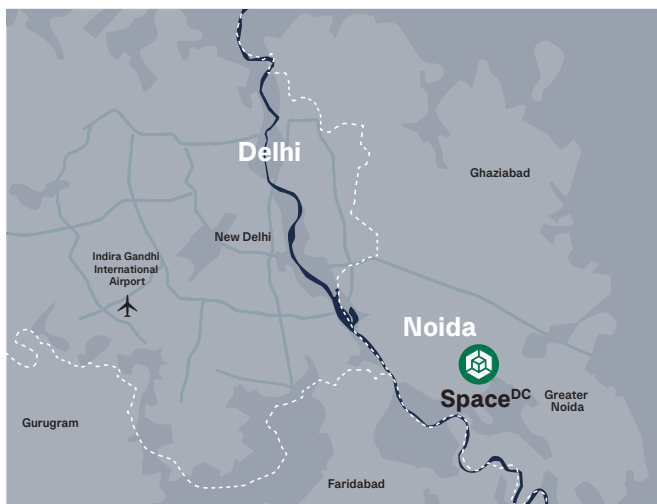
48MW facility

## Space to grow

Space<sup>DC</sup> is a visionary data center partner who provides secure, resilient and network rich data center solutions to help our customers unlock growth opportunities across Asia's fast moving digital markets.

## Gateway to India

Designed to be Noida's premier data center, our carrier neutral, state of the art facility delivers your business resiliency, redundancy and scalability. With a PUE of 1.3 and multiple connections to cloud platforms and exchanges you can build the IT ecosystem you need.



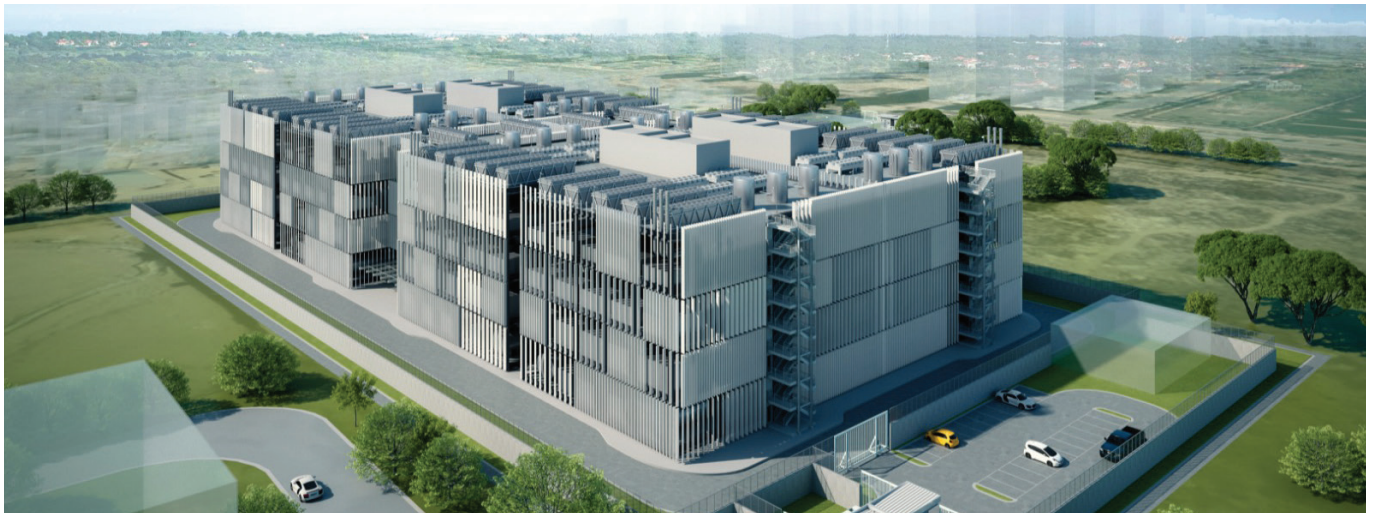
## Convenient location

- Located in Noida, southeast Delhi.
- 24km from Delhi.
- 36km from Indira Gandhi International Airport.
- Adjacent to data center cluster.
- Dual HV power feeds.
- Diverse fibre connections.
- Convenient metro access to site.



## Hyperscale design

Build an ecosystem to suit your business needs within NCR1, our world class, resilient data center in Noida, India. With 48MW of critical power, network rich connectivity, customizable data halls and 8kW average rack density makes it ideal for hyperscalers looking for 99.982% availability.



## NCR1 data center

### Specifications at a glance

<b>Facility Features</b>	<ul style="list-style-type: none"> <li>2x four story buildings</li> <li>Total of 40,000m<sup>2</sup></li> <li>32 x 1500kW data halls</li> <li>99.982% availability</li> <li>Four story admin building</li> </ul>
<b>Data Hall Features</b>	<ul style="list-style-type: none"> <li>1500kW IT load per 500m<sup>2</sup> data hall</li> <li>192 racks per hall @ 8kW per 800mm (W) x 1200mm (D) x 2300mm (H) rack</li> <li>258 racks per hall @ 6kW per 600mm (W) x 1200mm (D) x 2300mm (H) rack</li> <li>Secure zone areas for privacy</li> <li>Rack height up to 52U</li> <li>Floor to floor height: 6.3m</li> <li>Data hall ceiling height: 4.2m</li> <li>Data hall structural floor loading: 15kPa combined</li> </ul>
<b>Utility Power and Generators</b>	<ul style="list-style-type: none"> <li>Dedicated onsite transformers</li> <li>N+1 diesel backup generators with minimum 24 hour fuel at full load</li> </ul>
<b>IT Power</b>	<ul style="list-style-type: none"> <li>N+1 1350kW static uninterrupted power supply systems for IT loads with five minute battery backup</li> <li>Dual busway power distribution, 2 takeoff boxes per rack, up to 32A 3ph</li> </ul>
<b>Cooling</b>	<ul style="list-style-type: none"> <li>N+1 high efficiency electric air cooled chillers</li> <li>N+2 CRAC units per data hall</li> <li>UPS power to CRACs and pumps for continuous cooling</li> <li>Hot aisle containment</li> <li>Chilled water supply allows for water cooled racks at up to 50kW each</li> </ul>
<b>Connectivity</b>	<ul style="list-style-type: none"> <li>Carrier neutral</li> <li>Multiple ISPs available to the site</li> <li>4 Meet Me Rooms (MMRs)</li> <li>Multiple entry points and diverse underground cable pathways to the building with site diagonal diversity</li> </ul>
<b>Monitoring and Security</b>	<ul style="list-style-type: none"> <li>24/7 onsite security personnel</li> <li>Threat and Vulnerability Risk Assessment (TVRA) – designed to low risk category</li> <li>Cardkey access control and biometric authentication procedures</li> <li>Sitewide CCTV surveillance</li> <li>24/7 onsite NOC monitoring power, HVAC and critical systems</li> <li>24/7 Singapore security monitoring and NOC, providing overview and support to site</li> <li>CSMS monitors all building functions including BMS, SCADA, EPMS, fire, security and access control systems</li> </ul>
<b>Fire Protection</b>	<ul style="list-style-type: none"> <li>Double interlock, dry pipe, pre action sprinkler system to data halls</li> <li>VESDA overhead and concealed space smoke detection to data halls</li> <li>Emergency warning and indication systems through facility</li> <li>Water mist suppression to generator enclosures</li> </ul>
<b>Grounding</b>	<ul style="list-style-type: none"> <li>Clean earth bonding and building lightning protection are integrated into the electrical grounding system</li> </ul>
<b>Other Services</b>	<ul style="list-style-type: none"> <li>Secure loading bay for trucks and containers</li> <li>Full rack height goods lifts and corridors</li> <li>Dedicated staging and storage rooms</li> <li>Office space and meeting rooms</li> <li>Remote hands</li> <li>Customer account managers</li> <li>Secure onsite parking</li> </ul>

## Find Out More

Contact us now for more information about our data centers or to schedule a tour.

info@spacedc.com | +65 6958 0972 | 72B Boat Quay, #03-01, Singapore 049860 | www.spacedc.com